

# Back to Basics

**Are candidates unable  
or unwilling to come  
work for you?**

# Back to Basics

Are candidates **unable** or unwilling to come work for you?

**Unable:** not physically or logistically able to

# Back to Basics



Find your job  
posting...



# Back to Basics



How easy was it to find your opening?  
Would you be excited to apply for this role?



Laundry list of requirements?



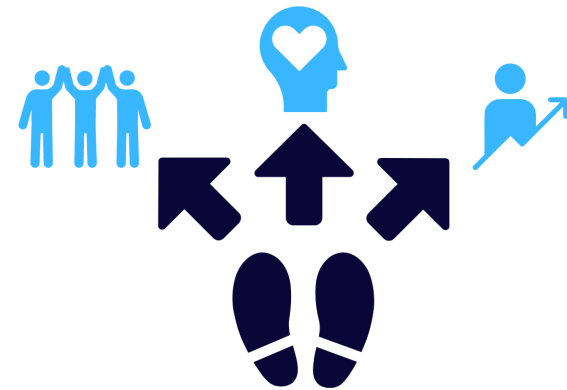
# Back to Basics

Are candidates unable or **unwilling** to come work for you?



**Unwilling:** not ready to, reluctant, not wanting to, not interested in

People & Tools



# Back to Basics

**Are candidates unable  
or unwilling to come  
work for you?**